

Mailback Disposal:

The Stericycle Sharps Mailback Disposal Service is another option for people who deal with medical issues at home. This is an environmentally responsible and safe way to dispose of sharps.

How it Works:

- 1) Visit www.stericycle.com/consumer-needle-disposal to purchase a kit.
- 2) Each kit includes:
 - a. A government-approved plastic container specially designed for sharps waste
 - b. Postage-prepaid mailback shipping box
 - c. Pre-addressed shipping labels
 - d. Sharps disposal tracking form
- 3) When the container is full, you complete the simple tracking form and ship the container back to Stericycle in the provided box.
- 4) Stericycle will then properly document, treat, and dispose of the sharps container and its contents.

By being responsible and disposing of your sharps properly, you can help protect the community and the environment from unnecessary health risks.

Mention of a particular vendor or service should not be considered an endorsement by this agency. There may be other providers of these services. The information is provided solely for public information.

4/6/2015

References and Resources:

www.dupagehealth.org/rxbox

www.dupageco.org/recyclingguide

www.epa.illinois.gov (Sharps Fact Sheet)

 **DUPAGE COUNTY
HEALTH DEPARTMENT**
111 North County Farm Road
Wheaton, IL 60187
630-682-7400
www.dupagehealth.org/rxbox


Disposing Meds Safely

SHARPS DISPOSAL AT HOME



How to safely and easily
dispose of sharps in
your household trash


Disposing Meds Safely

What are sharps?

“Sharps” is a generic term used for any medical item that is sharp and can puncture skin, such as:

- ▶ Hypodermic needles
- ▶ EpiPens®
- ▶ Lancets and other items used for home glucose monitoring

Anyone who treats or monitors conditions such as diabetes, arthritis, or cancer at home may use sharps to do so.



Why it is important to dispose of sharps properly:

Exposed sharps in the trash can pose a great health risk to anyone who may come in contact with them, such as sanitation workers, trash haulers, housekeepers and your family members or pets. It is important to dispose of your used sharps properly. **Please be aware that the guidance in this document applies only to sharps generated in a household.**

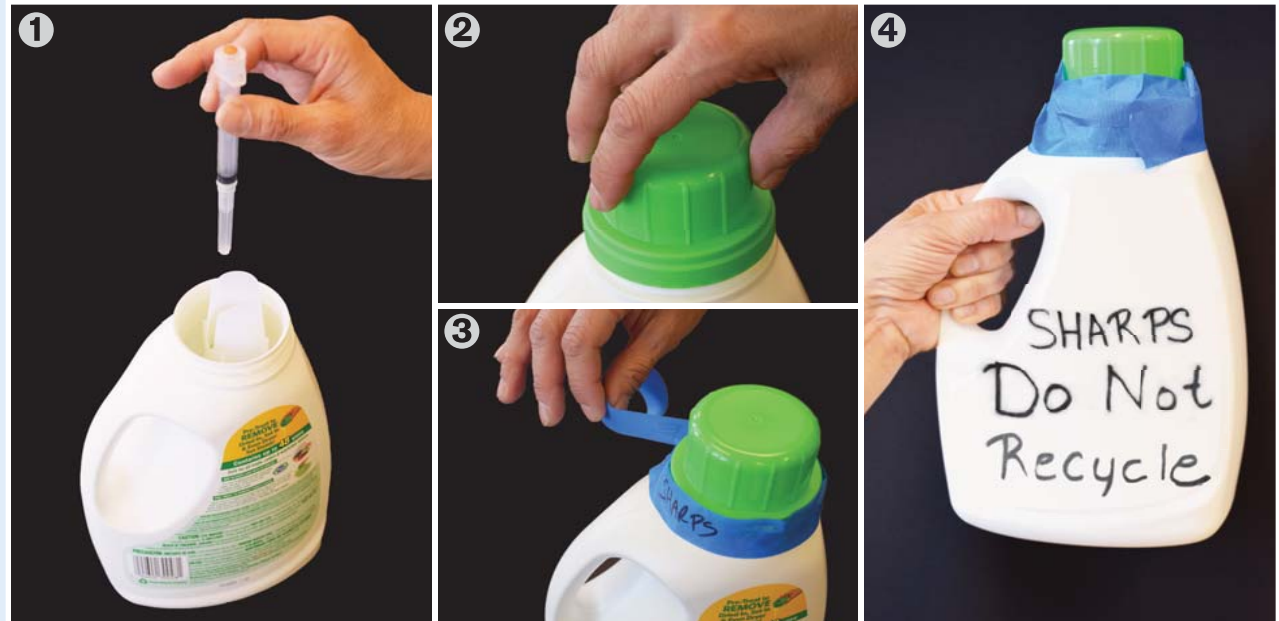
There are two ways to dispose of household sharps:

Regular trash and Mailback disposal options

Regular Trash:

You can choose to dispose of your used sharps in your regular trash (**not recycling bin**), but you need to follow these guidelines to help protect people who may come in contact with the waste, such as family members, trash haulers, and landfill workers.

1. Sharps medical waste should be placed in a sturdy, puncture-proof, hard plastic container with a tight-fitting lid, such as a red sharps container or a laundry detergent bottle.
2. When the container is full, the lid should be placed back on the container.
3. Tape the lid securely in place.
4. Mark this container as:
SHARPS DO NOT RECYCLE
and then place the container in your household trash.



Since many municipalities manage contracts for household trash pickup services, be sure to check with your municipality or local trash hauler for any other guidance about disposal of sharps in your community.



RxBOX is for household medications only. Household sharps should **not** be put into RxBOX containers. Please dispose of them in your household trash using these easy-to-follow instructions.

For more information on proper disposal, visit our website at www.dupagehealth.org/rxbox or call the DuPage County Health Department at 630-221-7046.